



# Ministry of Communication



## Internal Circulating Directive

Subject: Bloomsbury Festival 2013 Programme

# THE MINISTRY OF COMMUNICATION

19 October 2013

11-6pm	The Ministry of Communication	Ceremonial Stairs
11-5pm	100 Images of Migration	SAS Lobby
10-4pm	Bloomsbury Group Wiki-Edit-a-Thon	Senate House Library
11-6pm	Ministry of Communication	Malet Street Car Park
	Orwellian Garden	
11-6pm	Small Global: Extreme Energy	Deller Hall
11-4pm	Spread the Word Drop in Desk	Crush Hall
11-6pm	SAS Publications Stall	Crush Hall
11-1pm	Exploratorium: Exploring your Senses (first session)	Macmillan Hall
11-12.15pm	Senate House at War	Beveridge Hall
12-5pm	Poetry Explorers - Finding Poetry in Bloomsbury	Russell Square
12.30-1.30pm	The Museum of Writing Presents: A History of Writing	G22/26
12.30-1.30pm	Senate House Tour	Information desk
12.30-1.30pm	Imagining Bloomsbury's Streets	Beveridge Hall
1.30pm-2pm	Sarah Angliss: Sound Artist (first performance)	Macmillan Hall
2-3.30pm	Tour of a Small Globe: Introducing 'Extreme Energy'	Deller Hall
2-3pm	Resurrecting Lost London Fictions	Beveridge Hall
2- 4.30pm	Ministry of Communication: Make Your Own Pamphlet	Room 102
2.30-3.30pm	Senate House Tour	Information desk
3-4pm	The Museum of Writing Presents: Quill Making and Wax Tablet Workshop	G34
3-5pm	Exploratorium: Exploring your Senses (Session Two)	Macmillan Hall
3.30-4.30pm	Bloomsbury in Contemporary Fiction: D.J. Taylor and Helen Smith	Beveridge Hall
4.30-5.30pm	Senate House Tour	Information desk
5-6pm	Bloomsbury, Bad Journeys: Iain Sinclair and Phil Cohen	Beveridge Hall
6-7pm	30, 000 Gods and Myths from the Warburg Institute	Chancellor's Hall
5.30-6pm	Sarah Angliss: Sound Artist (second performance)	McMillan Hall
7-8.30pm	The Power of Propaganda: Public Information Cinema	Beveridge Hall

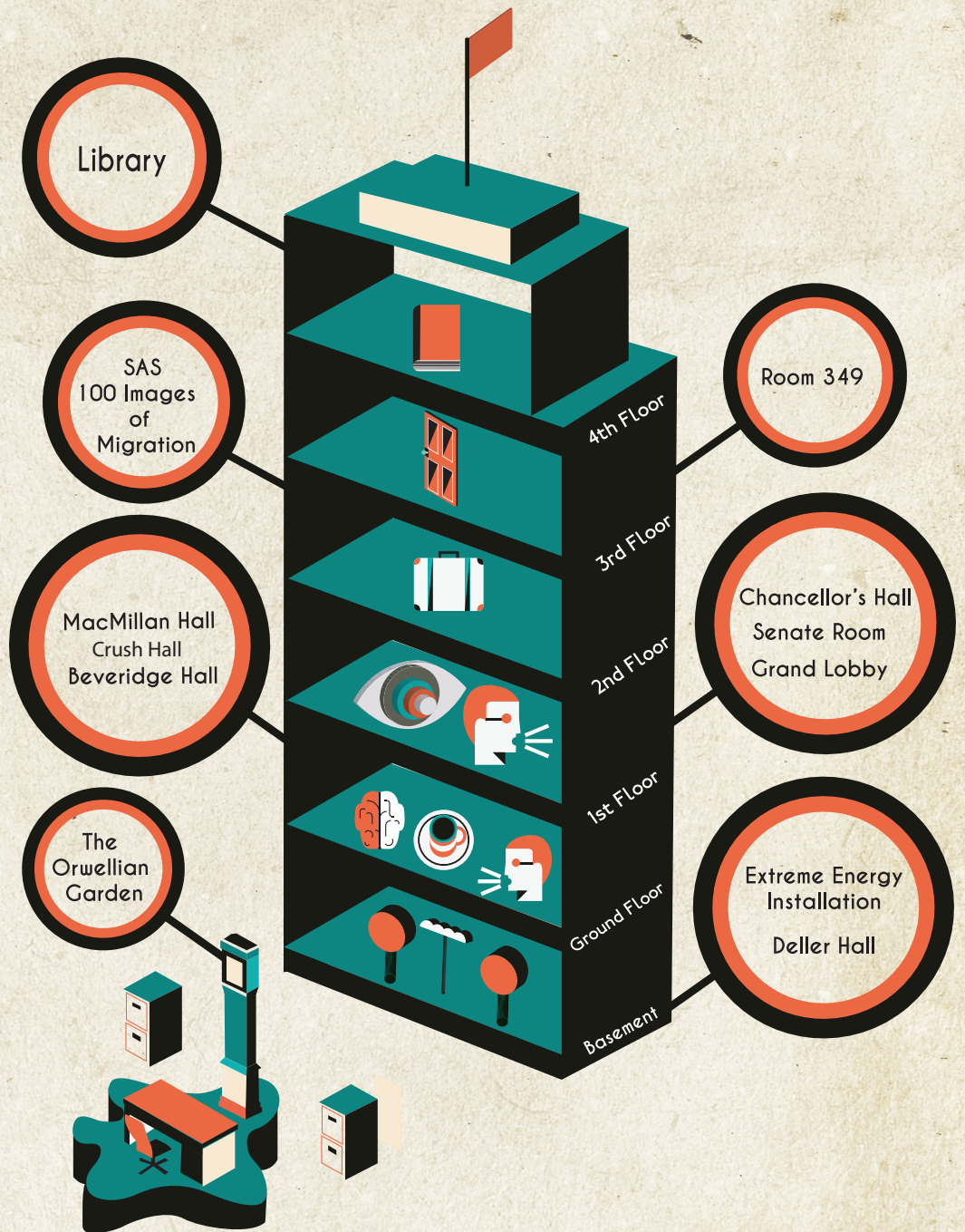
All Festival events are free. Some events have a small allocation of tickets available to be booked in advance from the Bloomsbury Festival website. If the event is full or booking is closed you can still turn up on the day - at least 50% of tickets will be available on a first come, first served basis. If the event is not bookable then you should just turn up on the day. Please arrive early to avoid disappointment.



Institute of Advanced Legal Studies  
Institute of Classical Studies  
Institute of Commonwealth Studies  
Institute of English Studies  
Institute of Historical Research

Institute of Latin American Studies  
Institute of Modern Languages Research  
Institute of Musical Research  
Institute of Philosophy  
The Warburg Institute

Supporting research in the humanities



20 October 2013

12-2pm	Spread the Word Drop in Desk	Crush Hall
12-5pm	The Ministry of Communication	Crush Hall
12-5pm	100 Images of Migration	SAS Lobby
12-4pm	Ministry of Communication	Malet Street Car Park
	Orwellian Garden	
12-4pm	Parkour Workshops	Malet Street Car Park
12-6pm	Small Global: Extreme Energy	Deller Hall
12-1pm	Senate House Tour	Information desk
12-1pm	Endangered Archives	Beveridge Hall
1.30-7.30pm	Publications Book Stall	Crush Hall
2-3pm	Senate House Tour	Information desk
2-3pm	Bloomsbury, a History of Refuge	Beveridge Hall
3-4pm	Political Cabaret in Exile: Music from the Miller Archive	Chancellor's Hall
4-5pm	Senate House Tour	Information desk
4-5.30pm	Human Rights Poetry Slam	Beveridge Hall
6-7pm	In Protest: New Human Rights Poetry	Beveridge Hall